



GFI MailEssentials

for Exchange/SMTP

Server-based anti-spam, disclaimers, mail archiving & more

With fraudulent, inappropriate and offensive emails being delivered in vast quantities to businesses every day, spam protection is a vital component of your network's security strategy. Spam wastes network users' time and network resources, and can also be dangerous. GFI MailEssentials offers spam protection at server level and eliminates the need to install and update anti-spam software on each desktop.

GFI MailEssentials offers a fast set-up and a high spam detection rate using Bayesian analysis and other methods – no configuration required, very low false positives through its automatic whitelist, and the ability to automatically adapt to your email environment to constantly tune and improve spam detection. GFI MailEssentials will eliminate over 98% of the spam from your network! GFI MailEssentials also adds email management tools to your mail server: disclaimers, mail archiving and monitoring, Internet mail reporting, list server, server-based auto replies and POP3 downloading.

Bayesian filtering technology

Bayesian filtering is widely acknowledged by leading experts and publications as the best way to catch spam. A Bayesian filter uses a mathematical approach based on known spam and ham (valid email). This gives it a tremendous advantage over other spam solutions that just check for keywords or rely on downloading signatures of known spam. GFI's Bayesian filter uses an advanced mathematical formula and a dataset which is 'custom-created' for your installation: The spam data is continuously updated by GFI and is automatically downloaded by GFI MailEssentials, whereas the ham data is automatically collected from your own outbound mail. This means that the Bayesian filter is constantly learning new spam tricks, and spammers cannot circumvent the dataset used. This results in a 98+% spam detection rate, after the required two-week learning period. In short, Bayesian filtering has the following advantages:

- Looks at the whole spam message, not just keywords or known spam signatures
- Learns from your outbound mail (ham) and therefore greatly reduces false positives
- Adapts itself over time by learning about new spam and new valid mail
- Dataset is unique to your company, making it impossible to bypass
- Multilingual and international.

Features & benefits

Highest spam detection rate (98%) because of its Bayesian filtering technology

Lowest false positives through its patented auto whitelist feature

Server-based install, no client software required

Allows users to review mail marked as spam from junk mail folder

Server-based anti-spam

GFI MailEssentials is server-based and installs on the mail server or at the gateway, eliminating the deployment and administration hassle of desktop-based anti-spam products. Desktop-based anti-spam involves training your users to create anti-spam rules sets, and subsequently users have to spend time updating these rules. Besides, this system does not prevent your server message stores from filling up with spam.

Downloads updates to spam profile database

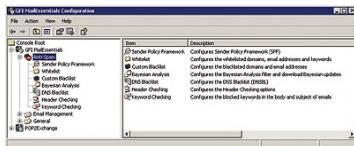
GFI MailEssentials can download updates to the Bayesian spam profile database from the GFI site, ensuring that it recognizes the latest spam and spamming techniques. GFI maintains the spam profile database by working with a number of spam collection organizations that continually supply spam samples.

Sort spam to users' junk mail folders

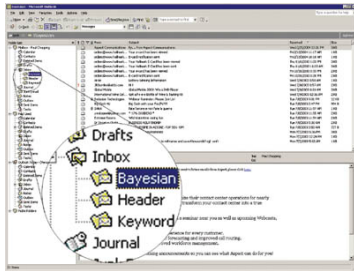
GFI MailEssentials gives you the flexibility to choose what to do with spam. You can delete it, move it to a folder, forward the spam mail to a public email address or folder, or send it to individual customizable folders (for example, a "junk mail" folder) in the end-users' inboxes. This allows users to easily review mail that has been flagged as spam.

Mail archiving to a SQL database

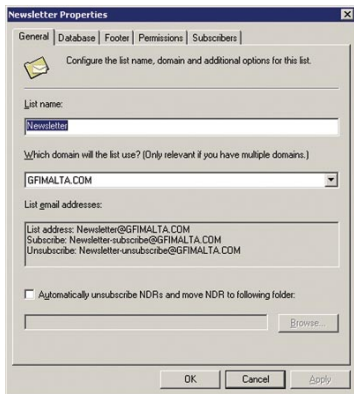
GFI MailEssentials can archive all inbound and outbound mail to a Microsoft SQL Server database. You can search for a particular mail or an entire email thread via the included web interface. Mail archiving is essential for back-up and search reasons.



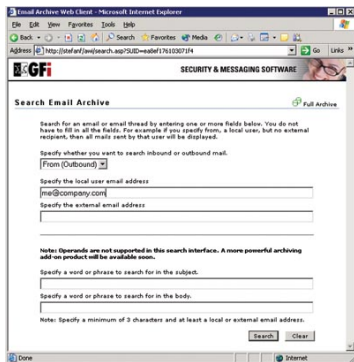
GFI MailEssentials configuration



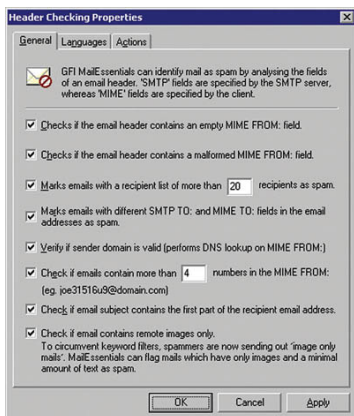
Users can review spam mail



Newsletter list options



Search mail archive from anywhere via the web-based interface



Check mail headers for spam practices

List server for newsletter lists and discussion lists

A list server is the best method for distributing company newsletters, since it automates the process of allowing users to subscribe and unsubscribe (required by anti-spam regulations). However, until now, list servers have been expensive and difficult to administer and they did not integrate with Exchange Server. GFI MailEssentials integrates with Exchange and can use Microsoft Access or Microsoft SQL Server as the backend. Both newsletter lists and discussion lists are supported.

Easy tuning of the Bayesian engine via public folders

Administrators can easily tune the Bayesian engine by dragging and dropping spam or ham to the appropriate public folder. GFI MailEssentials learns from the spam and ham that it picks up from these folders and further improves its spam detection rate. Administrators can control access to this feature through the use of Public Folder security.

Allow users to whitelist or blacklist via public folders

GFI MailEssentials allows users to whitelist or blacklist senders simply by dragging and dropping the appropriate mail to a public folder. This gives users more control and reduces administration. Administrators can control access to this feature through the use of Public Folder security.

Mail header analysis & keyword checking

GFI MailEssentials intelligently analyzes the email header and identifies spam based on message field information. It detects forged headers, encoded IPs, spam mutation, spam sent from invalid domains, and more. It also enables you to configure keywords to check for spam using keyword checking.

3rd party DNS blacklists (DNSBL) checking

GFI MailEssentials supports third party DNS blacklists (real time black hole lists), which are databases of known spammers. If the sending mail server is on one of those lists, GFI MailEssentials marks the email as spam. GFI MailEssentials supports popular third party blacklists such as ORDB, SpamHaus, Spamcop or RBL. GFI also supports custom blacklists.

Automatic whitelist management reduces false positives

Whitelists enable you to ensure that mail from particular senders or domains are never flagged as spam, permitting more stringent anti-spam rules. GFI MailEssentials includes a patent-pending automatic whitelist management tool, which automatically adds mail recipients to your whitelist. This greatly reduces false positives, without any need for additional administration. Whitelists can also be built based on domain names, email addresses and based on keywords.

Reports on spam filtering and mail usage

The new database-driven reporting engine allows you to create advanced reports on your inbound and outbound email. You can report on the amount of spam filtered and on rules which caught most spam. You can also generate reports on user, domain and mail server usage.

Company-wide disclaimer/footer/header text

GFI MailEssentials enables you to add disclaimers to the top or bottom of an email. Text and HTML formats are supported. You can include fields/variables to personalize the disclaimer. You can also create multiple disclaimers and associate them with a user, group or domain.

Support for SPF - the Sender Policy Framework

As most of today's spammers spoof email addresses, it is important to be able to check whether an email is genuine or if it has been sent from a forged sending address. This can be done via the Sender Policy Framework (SPF), which allows users to test whether a particular email originates from its claimed source. GFI MailEssentials is one of the first commercial anti-spam solutions to support this framework. Its new SPF module automatically checks whether the mail from a particular company was actually sent by its registered mail servers. For more on SPF, visit <http://spf.pobox.com>.

Eliminates directory harvesting

Spammers often try to guess recipient addresses by generating multiple random email addresses at a domain; they then send their spam mail to all those addresses. GFI MailEssentials checks the validity of ALL the email addresses included in the mail sent, via a query to Active Directory, and if they are not all valid, marks the mail as spam.

Mail monitoring

The mail monitoring feature enables you to keep a central store of the email communications of a particular person or department. By configuring the mail to be copied to an email address, all email can be stored in an Exchange or Outlook store, making searching for email or content easy.

Seamless integration with Exchange Server 2000/2003 & 5.5

GFI MailEssentials integrates seamlessly with Microsoft Exchange 2000/2003: It installs on the Exchange SMTP service and does not require gateway configuration. Via the SMTP protocol, it also works with Exchange 5.5, Lotus Notes and other popular SMTP/POP3 servers.

Content checking, anti-virus & anti-Trojan

Get anti-virus, email content checking and anti-Trojan protection for your mail server with the GFI MailSecurity/GFI MailEssentials bundle. GFI MailSecurity for Exchange/SMTP is an email content checking, exploit detection, threats analysis and anti-virus solution that removes all types of email-borne threats before they can affect your email users.

Other features:

- Whitelisting of emails by keyword
- Blocking foreign language spam based on character set
- Mail monitoring of particular user or department email communications
- Fake non-delivery reports (NDRs)
- Personalized server-based auto replies with tracking number
- POP3 downloader
- Web interface for searching mail archive.

You're in good company...

Many leading companies have chosen GFI MailEssentials. Here are just a few: Toyota, IBM, Schuff International, PerotSystems, British Midlands, B&W Speakers and many more.

Reviews



GFI MailEssentials voted MSEExchange.org Readers' Choice Award Winner - GFI MailEssentials for Exchange/SMTP was named the winner in the Anti-Spam category of MSEExchange.org Readers' Choice Awards. MSEExchange.org is a leading Microsoft Exchange Server resource site that conducts regular polls to discover which products are preferred by Exchange administrators.

- *MSEExchange.org, November 2003*



Top scorer with 9/10 - In a review of three server-based anti-spam products, technical author, Brien M. Posey named GFI MailEssentials as his "personal favorite" due to its "really practical methods for catching spam" and awarded it 9 marks out of a possible 10. He particularly likes the product's ability to block spam on the basis of character set, its whitelist and blacklist features, its spam handling capabilities and its generation of fake delivery receipts - "The idea is that if you can trick the sender into thinking that your E-mail address is bad then there is a really good chance that you will be removed from the sender's mailing list".

- *BrienPosey.com, April 2003*



GFI MailEssentials 7 named Editors' Choice 2002 - MCP Magazine reviewer David W. Tschanz selected GFI MailEssentials for Exchange/SMTP 7 in a bundle with GFI MailSecurity for Exchange/SMTP as the winner of the publication's Editor's Choice award 2002.

- *Microsoft Certified Professional Magazine, December 2002*

System requirements

- Windows 2000/2003 - Pro, Server or Advanced Server or Windows XP Professional.
- IIS5 SMTP service installed and running as an SMTP relay to your mail server.
- Microsoft Exchange server 2000, 2003, 4, 5 or 5.5, Lotus Notes 4.5 and up, or an SMTP/POP3 mail server.
- For the list server feature, Microsoft Message Queueing Services is required.

Microsoft
GOLD CERTIFIED
Partner


www.gfi.com