



# **Sage 200 v2009 and support for Microsoft Small Business Server**

Version: 1.03

Issue date: July 2009

## Sage 200 v2009 and support for Microsoft Small Business Server

This document aims to clarify and assist with the deployment of Sage 200 v2009 in a Microsoft Windows Small Business Server (SBS) environment.

It is important that you read and understand the following explanatory notes which outline the support boundaries of the Sage 200 suite when running in a SBS environment. The Sage 200 v2009 suite is supported on the following editions of SBS.

Users should check current licensing restrictions with Microsoft before deploying Sage 200 v2009 on SBS.

### Supported versions of Microsoft Small Business Server

	Windows 2003 SBS Standard Edition (2003 & 2003 R2)	Windows 2003 SBS Premium Edition (2003 & 2003 R2) (with SQL Server 2005 Workgroup)	Windows 2008 SBS x64 Premium Edition (with SQL Server 2008 Standard for Small Business Edition)
Minimum number of physical servers required	<b>1<sup>1</sup></b>	<b>1<sup>2</sup></b>	<b>2<sup>3</sup></b>
Recommended number of physical servers required	<b>2</b>	<b>1<sup>2</sup></b>	<b>2<sup>3</sup></b>
Sage 200 File Server	✓	✓	✓
Sage 200 Web Server	✓	✓	✓
Sage 200 Accounts Client	✓	✓	✓
Sage 200 CRM Server	✓	✓	✓
Sage 200 CRM Client	✓	✓	✓
Sage 200 WTE Server	✓	✓	✓
Sage 200 WTE Client	✓	✓	✓
Sage 200 Business Intelligence Server	n/a	✗	✓
Sage 200 Business Intelligence Client	✓	✓	✓
Sage 200 Integration Server (AIS)	✓	✓	✓
Sage 50 Payroll	✓	✓	✓

<sup>1</sup> When running the Sage 200 suite on a single server implementation of SBS, users must take into account the number of other services running on the server. Deployments should ideally be restricted to low user counts (6 – 8 users) and small to medium size databases (~2GB) in order to ensure acceptable performance. Better performance, and higher user counts/database size may be achieved by using a separate SQL server.

<sup>2</sup> Microsoft licensing restrictions mean that the edition of SQL Server 2005 workgroup which ships with SBS 2003 Premium must be installed on the SBS server.

<sup>3</sup> A two server solution is the only supported deployment for SBS 2008. See page 3 of this document for further details.

## Essential information for deploying the Sage 200 v2009 suite in a Microsoft Windows Small Business Server environment

### **Microsoft Windows 2003 Small Business Server - Standard Edition, 32-bit**

Microsoft Windows 2003 SBS Standard Edition does not include Microsoft SQL Server. The Sage 200 suite is supported in this environment, but users would require a separate SQL server licence to host the Sage 200 databases.

### **Microsoft Windows 2003 Small Business Server - Premium Edition, 32-bit, with SQL Server 2005 Workgroup Edition**

Microsoft Windows 2003 SBS Premium Edition ships with Microsoft SQL Server 2005 Workgroup Edition and is supported for all elements of the Sage 200 suite with the exception of Sage 200 Business Intelligence.

Sage 200 Business Intelligence requires Analysis Services which is included with Microsoft SQL Server 2005 Standard Edition and Microsoft SQL Server 2008 Standard Edition (32-bit and 64-bit) and is only supported on these versions of SQL Server.

SBS 2003 Premium Edition is a single server solution where all supported elements of the Sage 200 suite are installed on a single server.

### **Windows 2008 Small Business Server - Premium Edition, 64-bit, with SQL Server 2008 Standard for Small Business Edition**

Microsoft Windows 2008 SBS Premium Edition is a 64-bit only operating system that ships with Microsoft SQL Server 2008 Standard for Small Business Edition. The platform is not available as a 32-bit operating system. SBS 2008 is a two server solution with SBS 2008 on one server, and Microsoft SQL Server on a separate server for line of business applications. This restriction is imposed by Microsoft. See <http://www.microsoft.com/sbs/en/us/editions-overview.aspx>

SBS 2008 Premium ships with the Standard edition of Microsoft SQL Server and therefore supports Sage 200 Business Intelligence.

The Sage 200 suite is only supported on the Premium Edition of SBS 2008, deployed over two separate servers. This is due to the following;

1. The Sage 200 suite is reliant on Microsoft SQL Server and this is only supported by Microsoft on a secondary server with SBS 2008 Premium Edition. SQL Server is not supported on the SBS 2008 domain controller.
2. The SBS 2008 domain controller is configured by default with a considerable number of different application pools, certificates, and web sites which have complex binding rules. Installing elements of the Sage 200 suite (Sage 200 Web Server, Sage 200 CRM) can break these relationships, resulting in business services such as Microsoft Exchange, Microsoft Terminal Services Gateway, Microsoft Outlook Web Access and Microsoft Sharepoint stopping.
3. SBS2008 installs WSUS (Windows Server Update Service) by default. WSUS 64-bit is incompatible with 32-bit IIS applications. Since the WSUS settings are set at the global level, you cannot run a 32-bit application on an SBS2008 Domain even if it is in a 32-bit application pool. Since the Sage 200 web services are 32-bit only we recommend they must be run on the secondary server.

**Warning:** Do not install any element of the Sage 200 suite on the SBS 2008 domain controller. Installing the Sage 200 suite on the SBS 2008 domain controller server may stop Microsoft services such as Microsoft Exchange, Microsoft Terminal Services Gateway, Microsoft Outlook Web Access, and Microsoft SharePoint from running.

## Installing the Sage 200 Suite in a Microsoft Small Business Server environment

The Microsoft Small Business Server environment incorporates a wide range of services and applications and care should be taken when deploying the Sage 200 suite so as not to disrupt these services.

The following instructions must be followed in order to successfully deploy the Sage 200 suite in a SBS environment.

### Microsoft Windows Small Business Server 2003

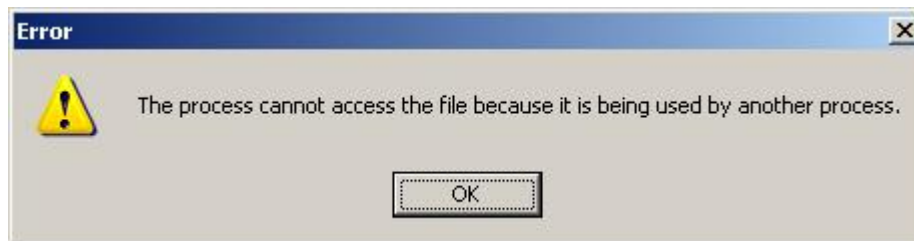
For SBS 2003, all Sage 200 suite components must be installed on the server in the following order.

Sage 200 File Server – as per standard installation

Sage 200 Web Server – You must select 'Default Web Site' from the drop down when prompted to select a website. HTTPS can be used if the site has not been previously configured with a certificate. By default the SBS 2003 Default Web Site is not configured with an existing SSL certificate.

Sage 200 Client - As per standard installation.  
Once the installation is complete, remove the 'Sage Task Launcher Listener' shortcut from the Windows Startup Menu 'Start\Programs\Startup' and restart the server.

**Note:** The port number used by the Sage Task Launcher Listener program conflicts with the Sharepoint Central Administration website. If the Sage Task Launcher Listener program is running, the Sharepoint Central Administration website will stop running and the following error message will be displayed when trying to restart the site.



The Sage Task Launcher listener service is not required on the server. It is a client side tool (installed as part of the Sage 200 client) which is required for Sage 200 CRM form launching.

Sage 200 CRM Server - The Sage 200 CRM website automatically configures itself under the Default Web Site. This is not amendable.

Sage 200 Integration Server (AIS) - as per standard installation.

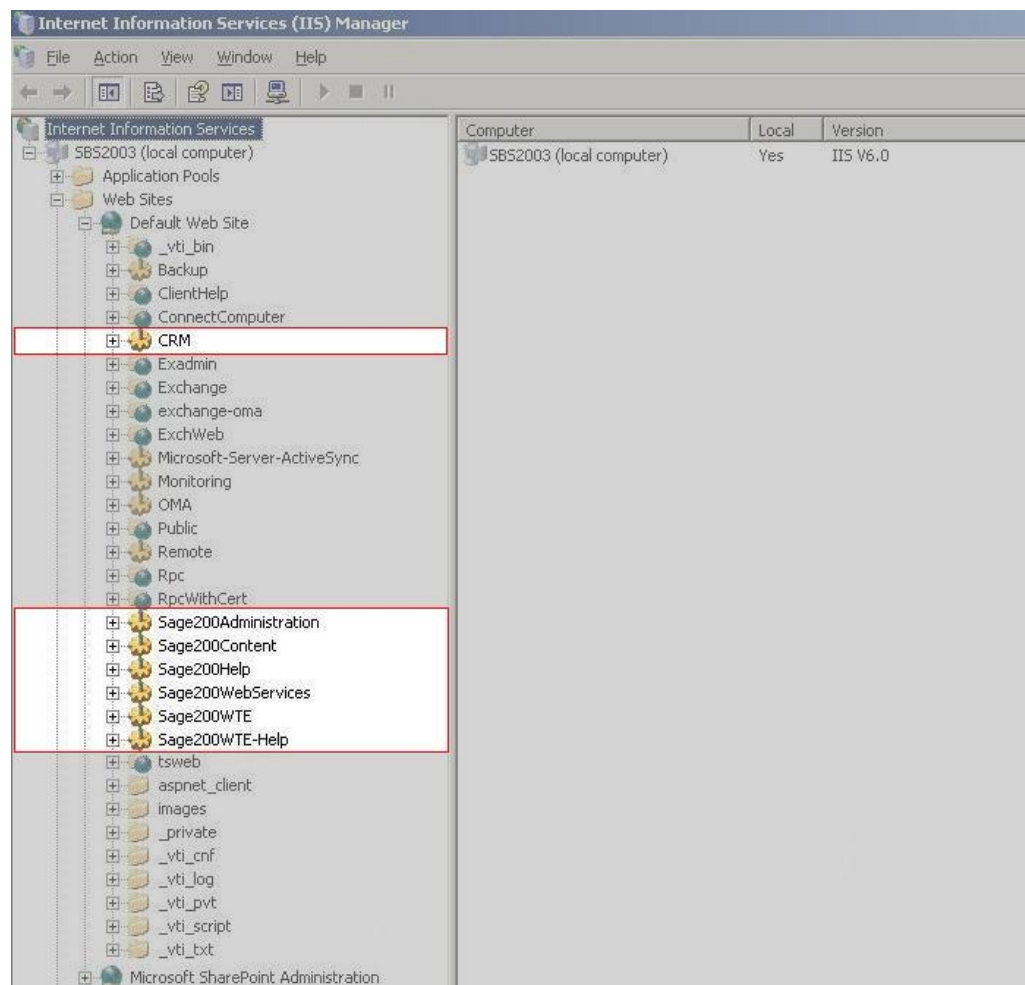
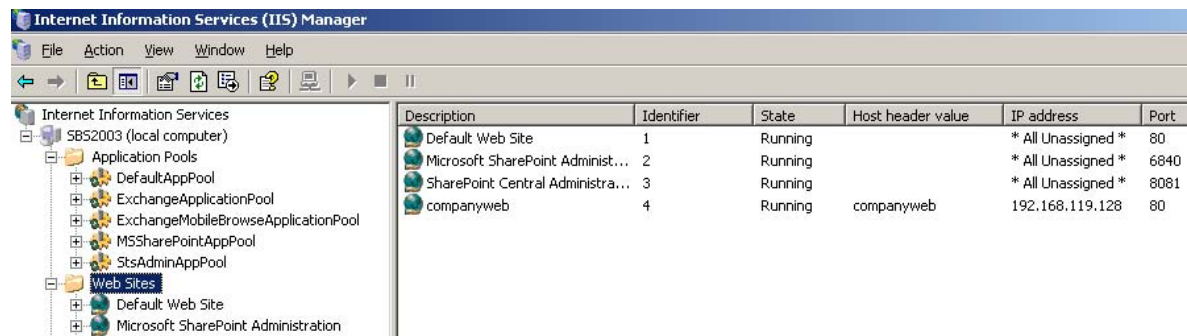
Sage 200 WTE Server - as per standard installation.

Sage 50 Payroll - as per standard installation.

## Final Installation Checks

Once the Sage 200 suite is installed it is recommended to open IIS Manager and confirm;

1. All web sites and application pools are running.
2. All Sage 200 related web content (Sage 200 Sys Admin, Sage 200 CRM, Sage 200 WTE) is contained in sub-directories underneath the 'Default Web Site'.
3. The Default Web Site is bound to HTTP Port 80 and SSL port 443.



## Installing the Sage 200 Suite on Microsoft Windows Small Business Server 2008

The following installation instructions must be followed to successfully deploy the Sage 200 suite in this environment.

For SBS 2008, all Sage 200 suite components must be installed on the server in the following order.

### Important Note:

The Sage 200 suite is only supported on SBS 2008 Premium when installed on the secondary Microsoft SQL server machine. The following instructions all relate to installation on the SQL server. Do not install any element of the Sage 200 suite on the SBS 2008 domain controller.

### Pre-requisites

1. Before installing any component of the Sage 200 Suite, you should ensure that the User Account Control (UAC) option is unchecked.

The User Account Control option can be checked once the installation is complete.

2. The Sage 200 Suite is reliant on certain components being installed as part of Internet Information Services v7 (IIS7). Ensure that you have installed and enabled the following areas of IIS on the SBS 2008 SQL Server machine:

#### Web Management Tools > IIS 6 Management Compatibility

IIS 6 Scripting Tools

IIS 6 WMI Compatibility

IIS Metabase and IIS 6 configuration compatibility

#### World Wide Web Services > Application Development Features

.Net Extensibility

ASP.NET

ISAPI Extensions

ISAPI Filters

#### World Wide Web Services > Security

Request Filtering

3. On 64-bit server platforms such as SBS 2008 the Internet Information Service (IIS) runs in 64-bit mode by default. You may need to run the following routine on the SBS 2008 SQL Server machine to reconfigure IIS to run in 32-bit mode. The Sage 200 Web Server is only supported when IIS is running in 32-bit mode.

Warning: Other applications and websites running in the default application pool will run in 32-bit mode after running these commands. You must ensure that these applications function correctly, or move them to a separate application pool.

- a. From a command prompt, run the following;

***cscript c:\inetpub\adminscripts\adsutil.vbs SET W3SVC/AppPools/Enable32bitAppOnWin64 1***

- b. From a command prompt, run the following;

***c:\Windows\Microsoft.NET\Framework\v2.0.50727\aspnet\_regiis.exe -i***

- c. Restart the IIS Service.

## **Installation**

Sage 200 File Server – as per standard installation

Sage 200 Web Server – as per standard installation.

Sage 200 Client - as per standard installation.

Sage 200 CRM Server - The Sage 200 CRM website automatically configures itself under the Default Web Site. This is not amendable.

Sage 200 Integration Server (AIS) - as per standard installation.

Sage 200 WTE Server - Refer to the Sage 200 v2009 Readme for details.

Sage 50 Payroll - as per standard installation.

Sage 200 Business Intelligence - as per standard installation.